



Camden Stoneleigh

Welcome Home

Find your new escape when you move to Camden Stoneleigh. Tucked into the natural Austin landscape, our community offers premium amenities and interior finishes. Outside the gates of Camden Stoneleigh, you will discover the convenience of quick access to Mopac Expressway, a short commute to and from Downtown and nearby shopping, dining and entertainment destinations. Escape the city and enjoy life at Camden Stoneleigh today.

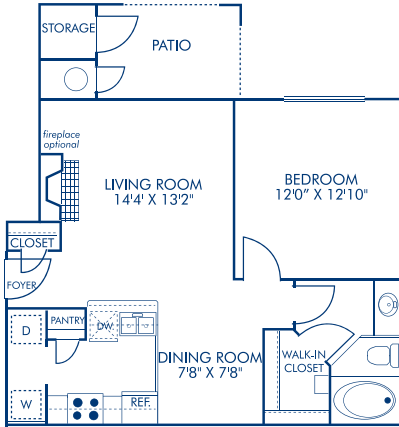


Community Features

- Attached Garages & Reserved Covered Parking Available
- Resort-Style Swimming Pool with Heated Spa
- Social Space with Wi-Fi & Pool Table
- 24-Hour State-of-the-Art Fitness Center
- Outdoor Grills
- Controlled Access Gates
- Extra Storage Available
- Executive Business Center
- Pet Friendly Community with Dog Park
- Beautifully Landscaped and Maintained Grounds
- Convenient Access to Mopac Expressway and Downtown Austin

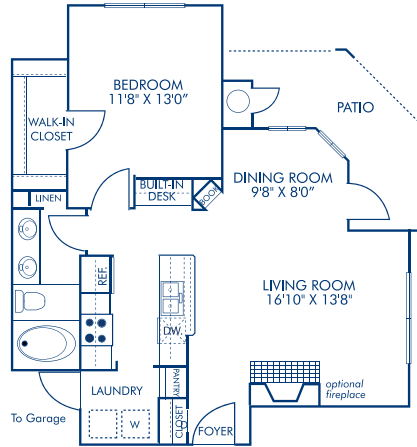
Your Choice of Apartment Homes

1 Bedroom/1 Bath – 692 sq. ft.



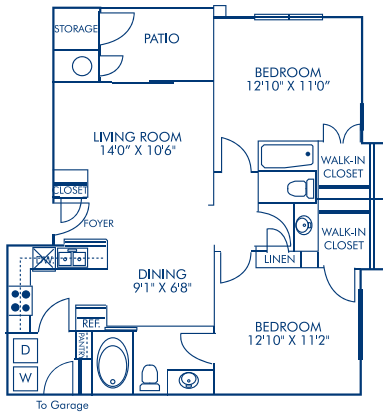
Model A1

1 Bedroom/1 Bath – 813 sq. ft.



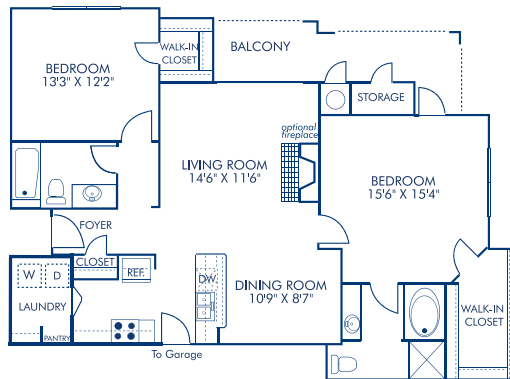
Model A4

2 Bedroom/2 Bath – 955 sq. ft.



Model B1

2 Bedroom/2 Bath – 1243 sq. ft.



Model B7

Residence Features

- Gas Fireplaces with Mantels*
- Attached Garages*
- Covered Parking*
- Rich, Dark Cabinetry
- Brushed Nickel Hardware
- Granite Countertops
- 9-Foot Ceilings
- Kitchen Pantries
- Walk-In Closets
- Ceiling Fans in all Living Rooms
- Built-In Bookshelves and Desks*
- Premium Cable TV Package Included
- 2-Inch Blinds
- Designer Paints
- Upgraded Flooring
- Private Patios/Balconies
- Full Size Washers/Dryers
- Double Sink Vanities*
- Stainless Steel Appliances
- Microwaves
- Garden Tubs
- Front Door Valet Trash Pickup

*Some features only in select apartments.

Location

From Loop 1/Mopac, proceed south to Davis Lane. Turn left (East) on Davis Lane and we are down 2 blocks on your right.

Pet Policy

We welcome your cats and dogs, small, medium and large, up to two pets per apartment. *Breed restrictions apply. See CamdenStoneleigh.com for more information



Click map for larger view

