



Camden Huntingdon

Welcome Home

Enjoy the easy life at Camden Huntingdon – a community designed with you in mind. Our 1 and 2 bedroom apartment homes feature open spaces and new interior finishes. Located between I-35 and Mopac, you will be just minutes from Austin Community College, North Austin Medical Center, Walnut Creek Metropolitan Park, and The Domain. Move into Camden Huntingdon - the good life is waiting for you.

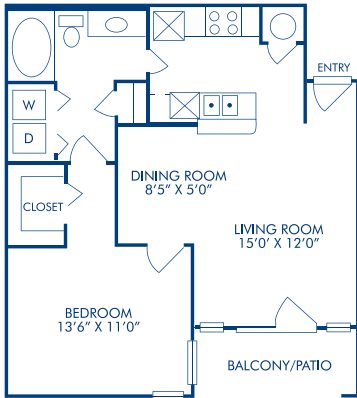


Community Features

- 24-Hour High-Endurance Fitness Zone including Cardio Equipment, Weight Machines, and Free weights
- Spectacular Pool with Wi-Fi Access and Outdoor Grills
- Pet-Friendly Community
- Resident Lounge with Business Center and Coffee Bar
- Covered Parking & Detached Garages
- Convenient access to I-35 and Mopac Blvd.

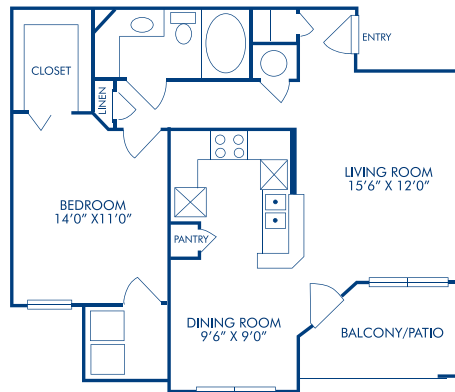
Your Choice of Apartment Homes

1 Bed/1 Bath – 703 sq. ft.



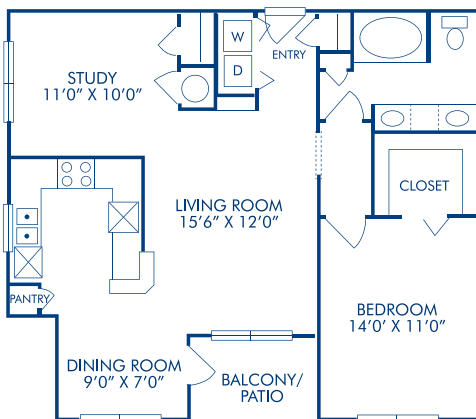
Model - A

1 Bed/1 Bath – 794 sq. ft.



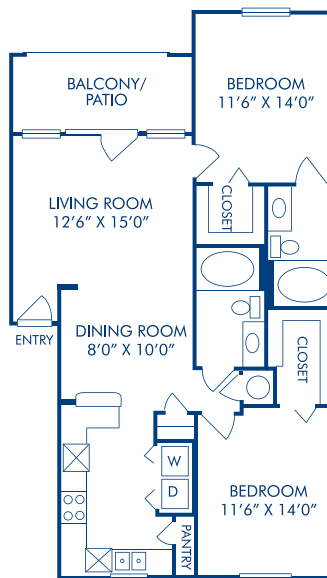
Model - B

1 Bed with Study/1 Bath – 909 sq. ft.



Model - C

2 Bed/2 Bath – 1060 sq. ft.



Model - D

Residence Features

- Walnut cabinetry and Granite Look Countertops
- Stainless Steel Appliances
- Private Patios/Balconies
- Crown Molding
- Kitchen Pantries
- Double-Sink Vanities and Oversized Garden Tubs*
- Linen Closets
- Full-Size Washers and Dryers Included
- Fireplaces*
- Premium Cable TV Package Included
- Walk-In Closets
- Two Inch Blinds
- Wood-style Flooring
- Premium Lighting Package
- Front Door Valet Trash Pickup

*Some features only in select apartments.

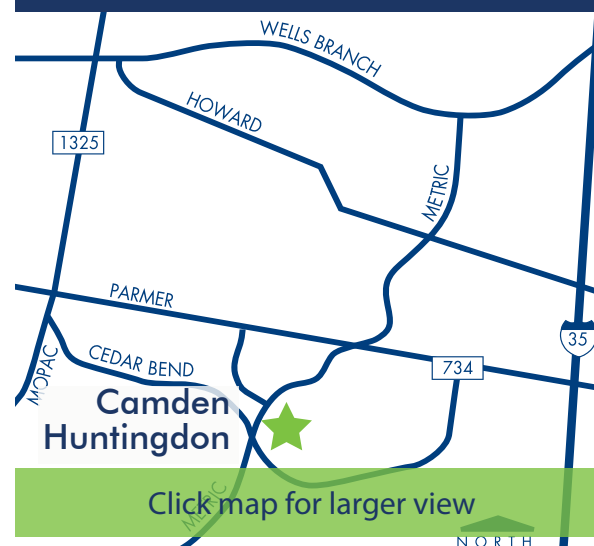
Location

From North Mopac Expressway, exit West Parmer Lane and drive east to Metric Boulevard. Turn right on Metric Boulevard and Camden Huntingdon is located on the left.

From I-35, exit West Parmer Lane and drive west to Metric Boulevard. Turn left on Metric Boulevard and Camden Huntingdon is located on the left.

Pet Policy

We welcome your cats and dogs, up to two pets per apartment, and a full-grown maximum weight limit of 75 pounds each. *Breed restrictions may apply. Visit CamdenHuntingdon.com for more information.



Click map for larger view