



Camden Brushy Creek

Welcome Home

Discover Camden Brushy Creek – a gated community in the prestigious Austin suburb of Cedar Park. Residents enjoy open 1, 2 or 3 bedroom floor plans featuring modern interiors in a neighborhood zoned to LISD. Camden Brushy Creek is pet friendly, with a welcoming leash-free pet park. Close proximity to Brushy Creek Lake and convenient access to Highway 183 makes life at Camden Brushy Creek both convenient and comfortable.

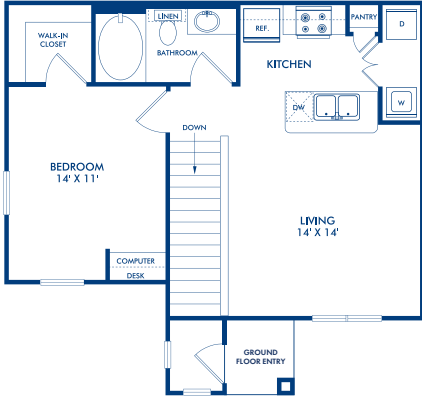
Community Features

- Sparkling Resort-Style Pool with Sun Decks
- Spacious State-of-the-Art Fitness Center
- Outdoor Grilling Stations and Entertaining Spaces
- Controlled Access Gates
- Private Movie Theatre
- Business Center
- Social Networking Café with Wi-Fi & Coffee Bar
- Wifi in Pool and Fitness Center Areas
- Resident Gaming Lounge
- Leash-Free Dog Park
- Climate Controlled Bicycle Storage & Workshop
- LISD Award Winning Schools
- Reserved Covered Parking Available
- Convenient Access to Highway 183



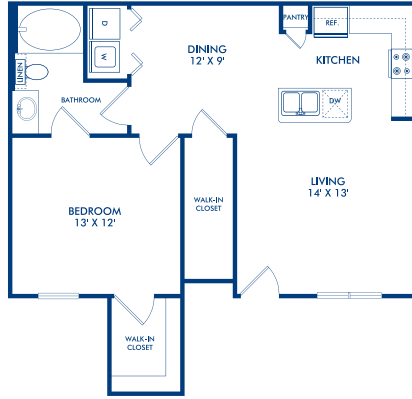
Your Choice of Apartment Homes

1 Bed/1 Bath – 703 sq. ft.



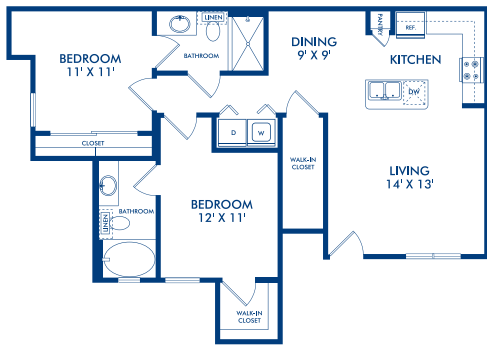
A1 - Agave

1 Bed/1 Bath – 743 sq. ft.



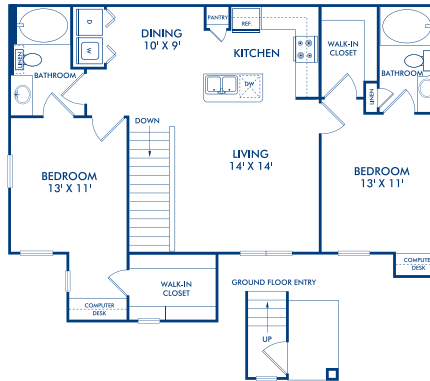
A3 - Wisteria

2 Bed/2 Bath – 956 sq. ft.



B1 - Bluebonnet

2 Bed/2 Bath – 1114 sq. ft.



B4 - Nettle

Residence Features

- 9-Foot Ceilings with Crown Molding*
- Spacious Walk-In Closets
- Glass Enclosed Stand-Up Showers*
- Wood-Style Flooring
- Stainless Steel Appliances
- Granite Countertops Throughout
- Vaulted Ceilings*
- Built-In Desks*
- Washers and Dryers Included
- Kitchen Pantries
- Garden Style Tubs
- Alarm System with Optional Monitoring
- Ceiling Fans
- Kitchen Island*
- Two Inch Blinds
- Front Door Valet Trash Pickup
- Interior Staircases*

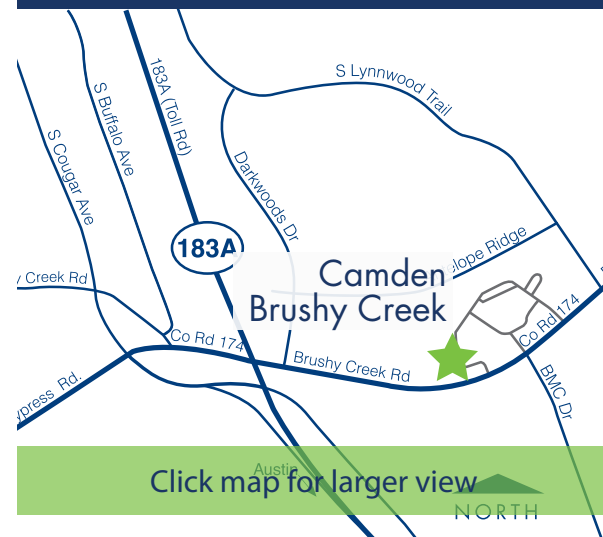
*Some features only in select apartments.

Location

From US 183-N, proceed toward Cedar Park. Turn right on Cypress Creek Road. Cypress Creek Road will turn into Brushy Creek Road. We are approximately 0.9 miles down on the left. From Parmer, proceed north on Parmer and turn left on Brushy Creek Road. 1101 Brushy Creek Road is on the right.

Pet Policy

We welcome your cats and dogs, up to two pets per apartment, and a full-grown maximum weight limit of 75 pounds each. *Breed restrictions may apply. Visit CamdenBrushyCreek.com for more information.



Click map for larger view